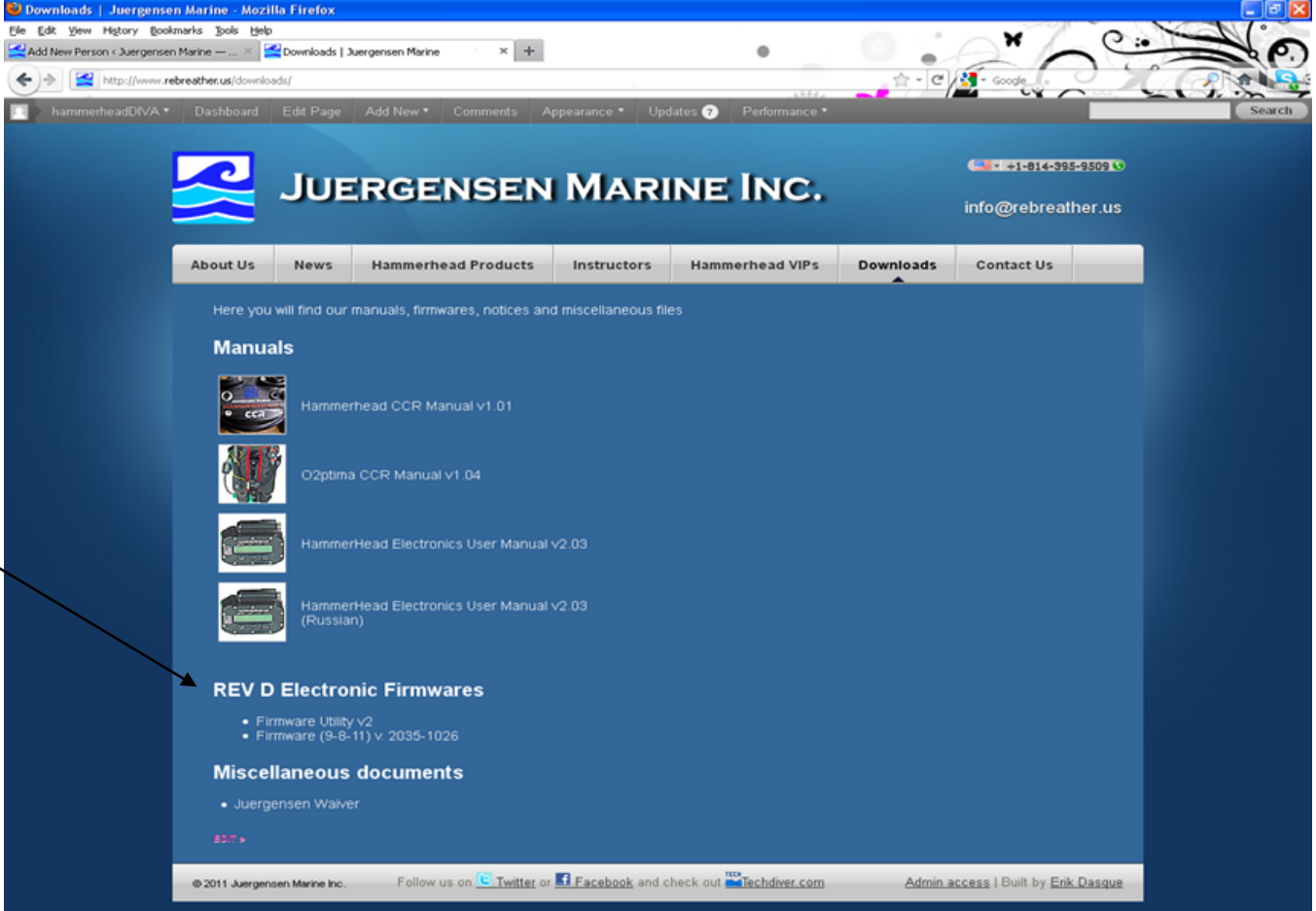
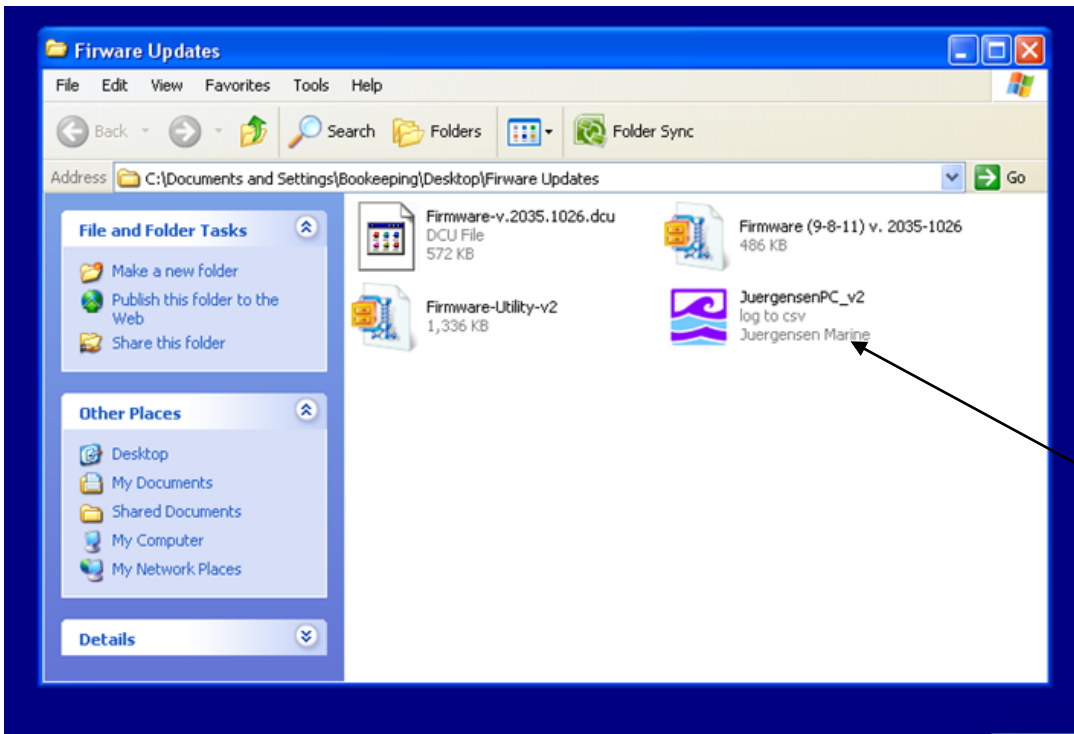


# Updating Your REV D Electronics

From the Juergensen Marine website, download both the current version of the firmware utility and the updated firmware code.



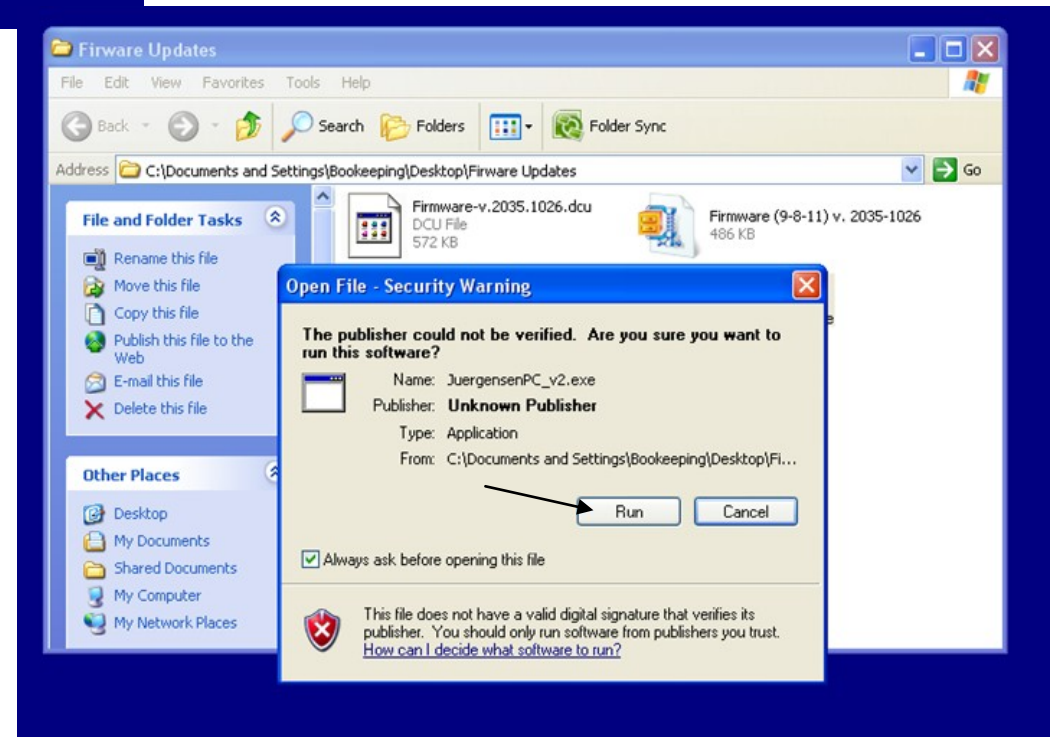
The screenshot shows the 'Downloads' page of the Juergensen Marine Inc. website. The page features a navigation menu with options like 'About Us', 'News', 'Hammerhead Products', 'Instructors', 'Hammerhead VIPs', 'Downloads', and 'Contact Us'. The main content area is titled 'Here you will find our manuals, firmwares, notices and miscellaneous files'. Under the 'Manuals' section, there are four items: 'Hammerhead CCR Manual v1.01', 'O2ptima CCR Manual v1.04', 'HammerHead Electronics User Manual v2.03', and 'HammerHead Electronics User Manual v2.03 (Russian)'. Below this, the 'REV D Electronic Firmwares' section lists 'Firmware Utility v2' and 'Firmware (9-8-11) v. 2035-1026'. A 'Miscellaneous documents' section includes 'Juergensen Waiver'. The footer contains copyright information for 2011 Juergensen Marine Inc., social media links for Twitter, Facebook, and Techdiver.com, and a link for 'Admin access | Built by Erik Dasque'.



Unzip the files and save to a place easy to find.

Double click the JuergensenPC\_v app

Double click "RUN" and run the JuergensenPC\_v app



The app will open.





Next, go to your wrist unit. Power up your wrist unit – and scroll through the menu until you reach the “Opt Menu”.

Select the option menu and then scroll to the “Enable Bluetooth” on your wrist unit. The screen will flash.



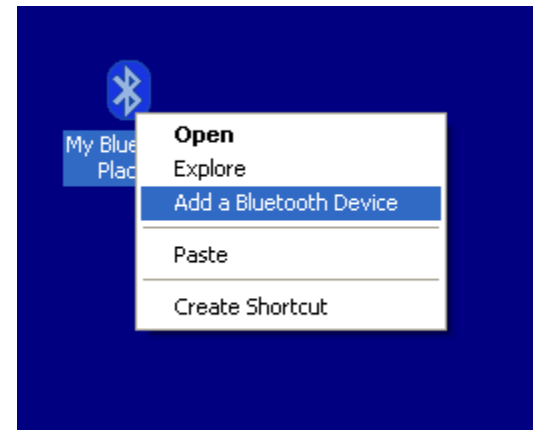
*Note: The Bluetooth will remain open on your wrist unit for 5 minutes. You may want to change your auto-shutdown factory default setting from 2 mins to 5 mins. The unit will not shut down once in the firmware update mode.*

Next, go to your PC and in My Bluetooth Place – right click and Add a Bluetooth Device.

Your wrist unit will appear as “HammerheadRevD\_bdkh03”.

*Note that “bdkh03” will not be the actual serial number that appears but your own serial number will be here.*

Add this device.



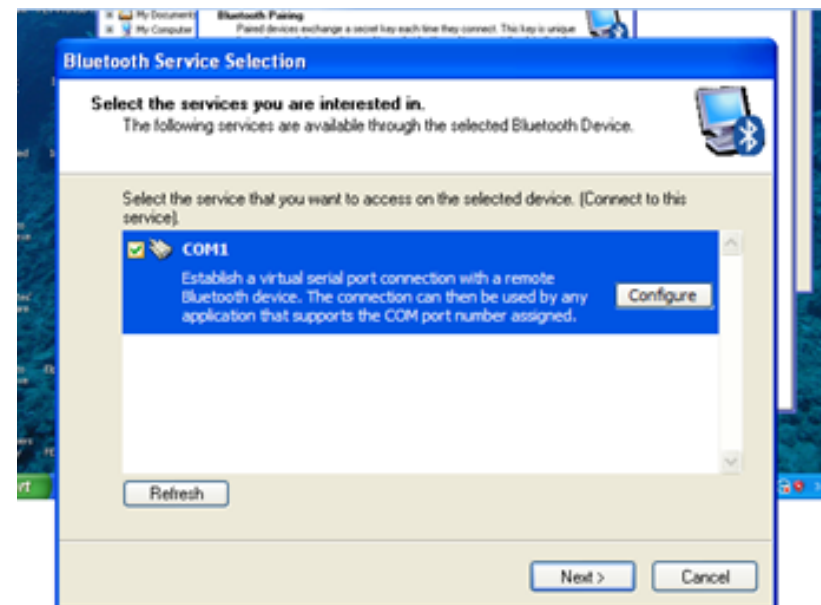


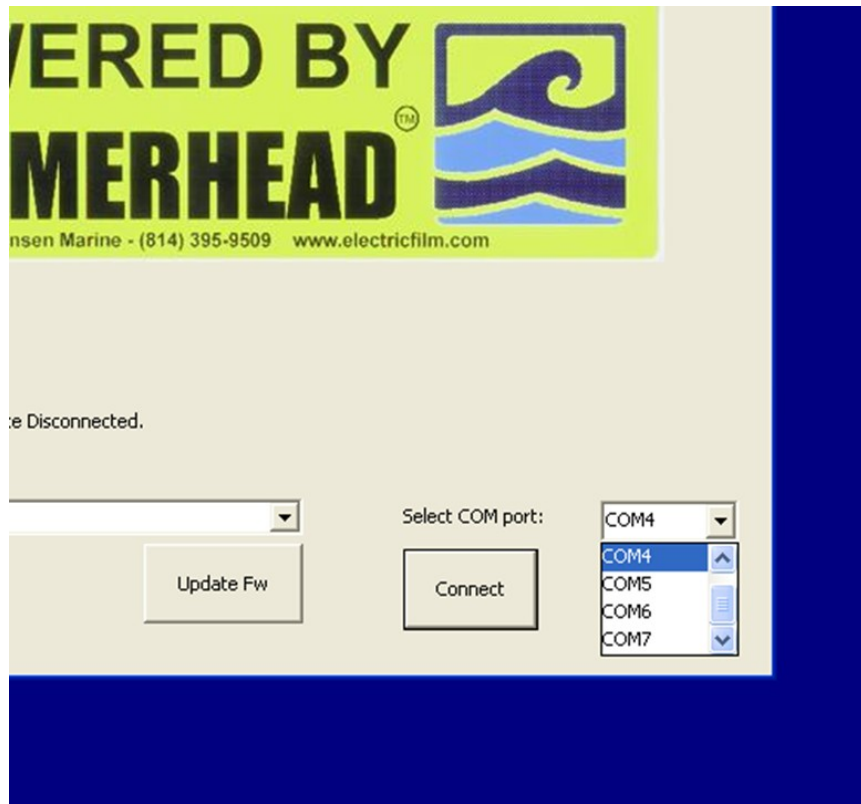
Select the COM1 box for your wrist unit and select Next and then Finish

Once you select your wrist unit and begin the pairing process – you must enter a 4 digit code to link the computer and wrist unit.

This code is 0000 (4 zeros).

Then select Next.



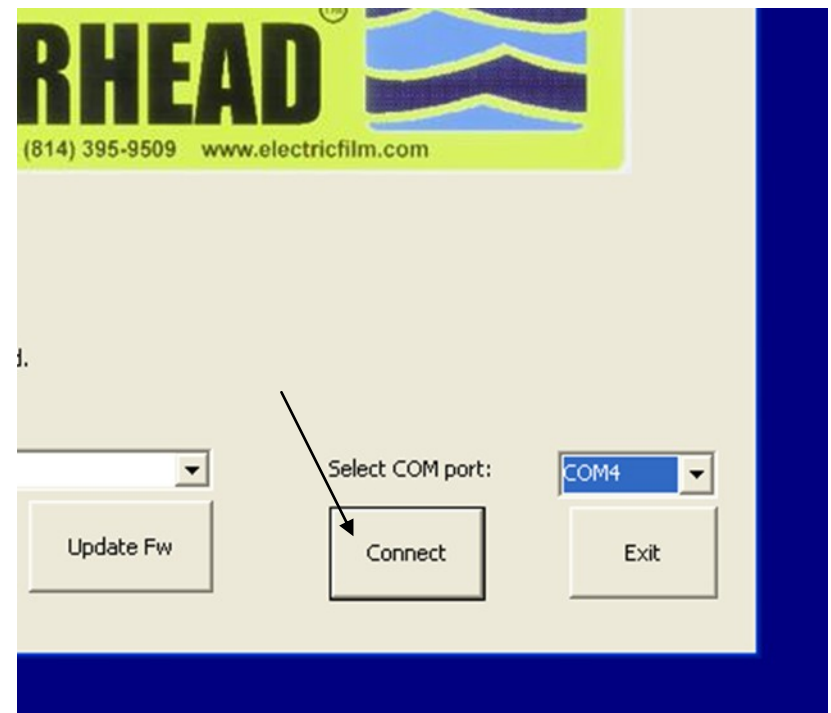


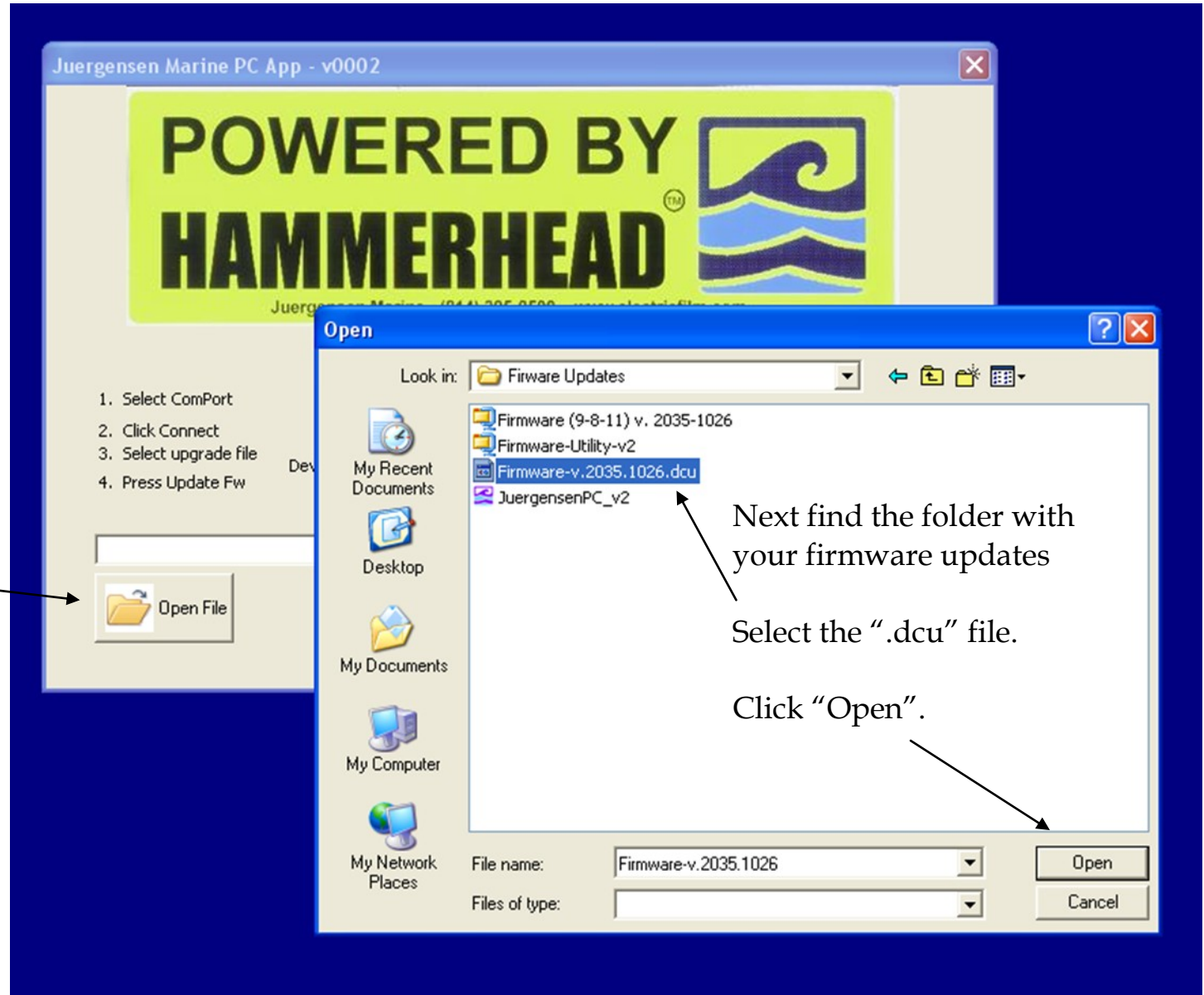
On the Firmware app – Select the COM port that your Bluetooth device is powered from.

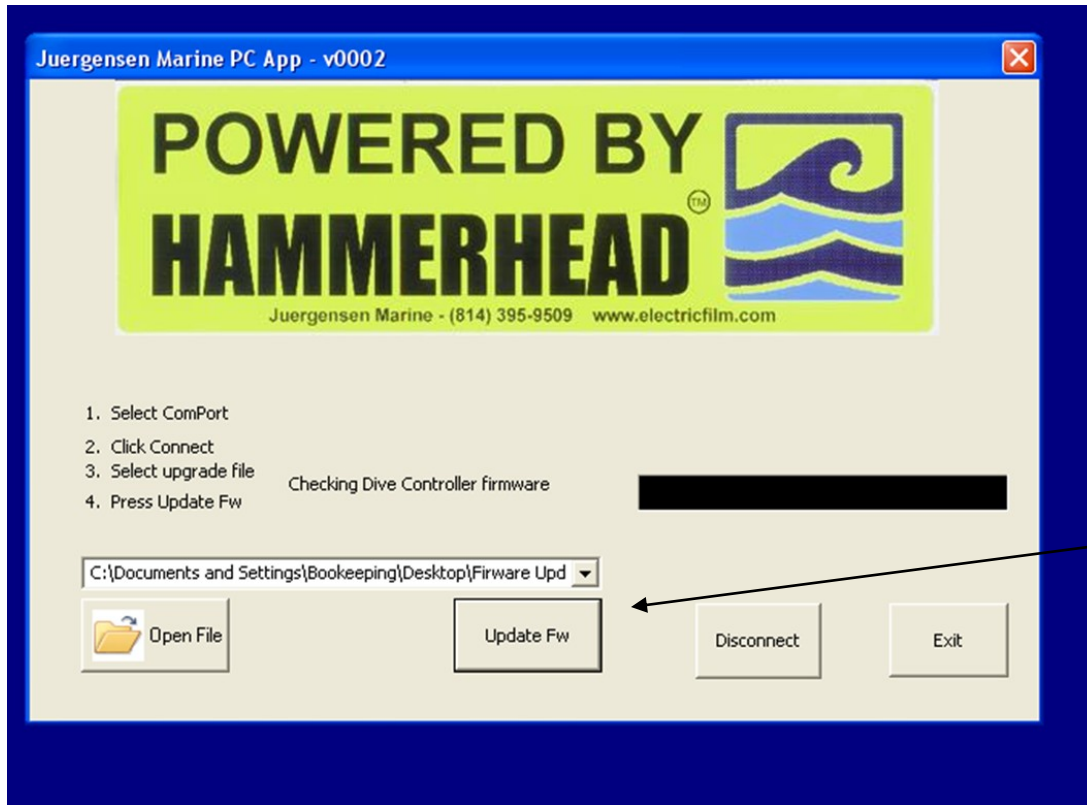
*Note: The COM port will vary between computers.*

Next click “Connect”.

The app will display “Device Connected” in the left side by the simple step instructions.







Next click "Update Fw"

The PC app will now show "Checking Dive Controller Firmware" and your wrist unit will show a checker board pattern on the screen as it begins to update.





The bar will begin to cycle through as the firm-ware is updated and a percentage of completion will be shown.

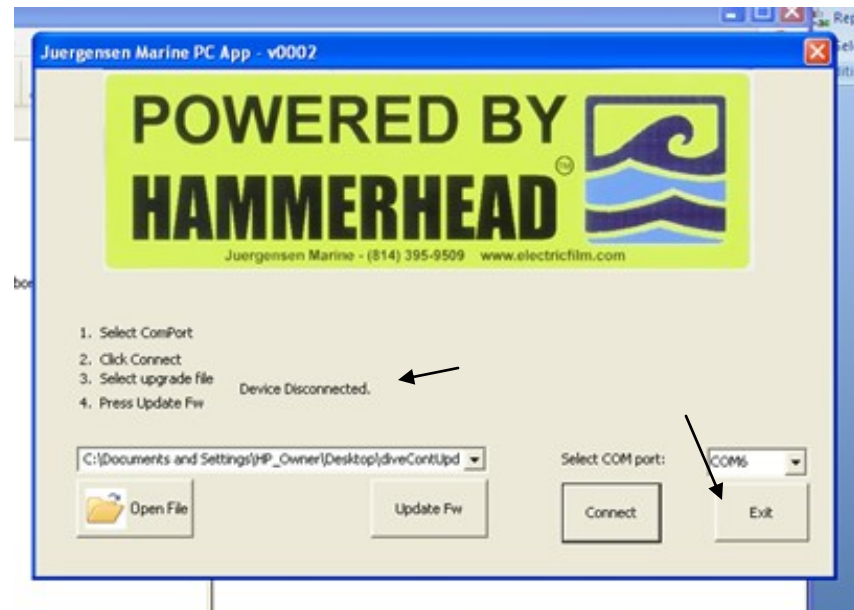
There are 4 stages that will be cycled through.

Once the wrist unit firmware is completely up-dated the wrist unit will shutdown. The app will display “Device Restarting”.

You will need to manually restart the wrist units. On the start up screen of the wrist unit at the bottom – the new version of firmware will be seen.

Once your unit is Successfully Up-dated! – the app will state the same.

Select the Disconnect button and disconnect your device. When the Device Disconnected appears then you can Exit the app.



Should you have any additional questions or comments – please contact **Tricia Hetz** at 814.395.9509 or [accounting@rebreather.us](mailto:accounting@rebreather.us).

**DIVE SAFE!**



Juergensen Marine, Inc.  
1448 Polk Hill Road  
Addison, PA 15411